

Level 8 QUIZ SECTION

Just as in the previous level, please ask yourself these three questions:

- 1. What's the basic rhythm? Is it normal?*
- 2. Is the rhythm disturbed (by extra beats, pauses, etc.)*
- 3. Is the rhythm replaced (is there a rhythm switch?)*

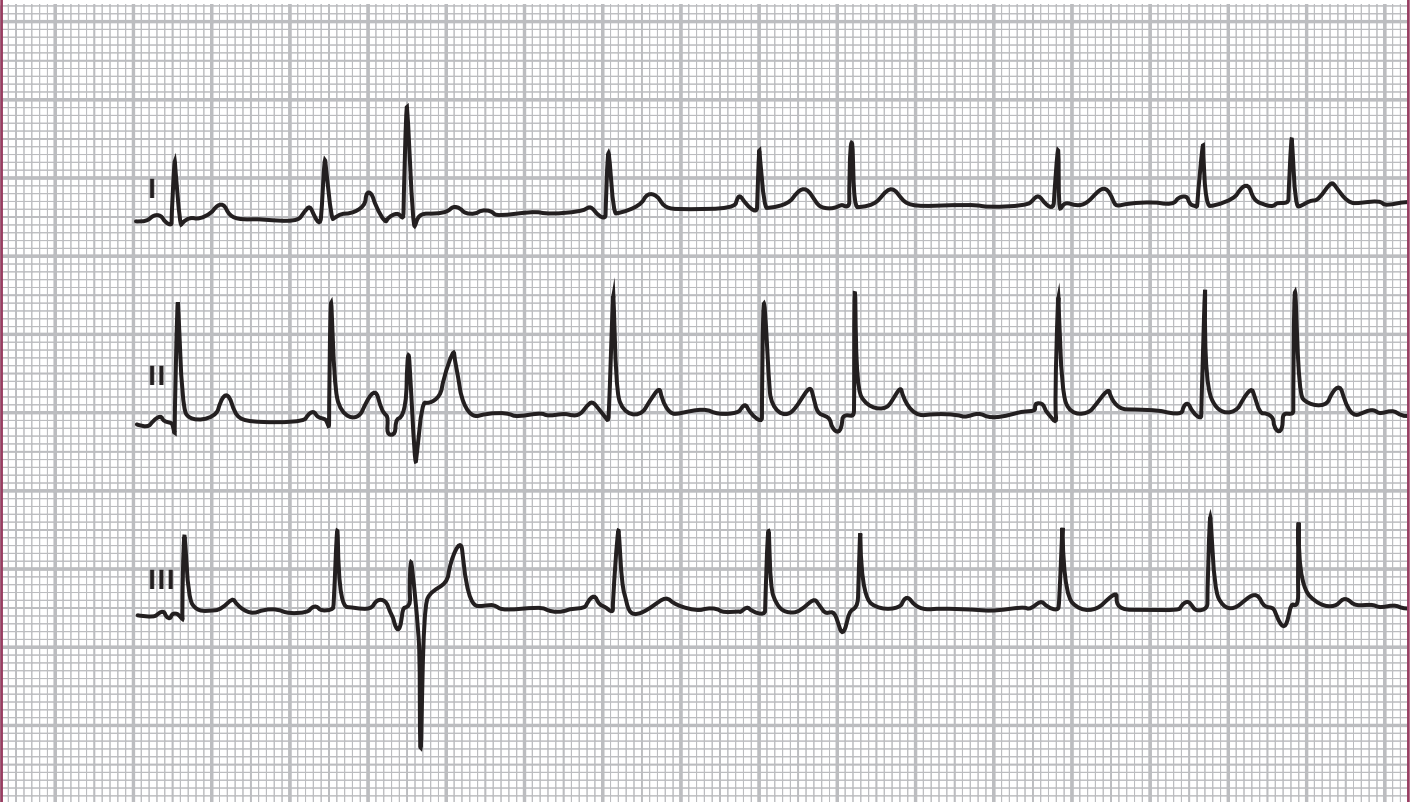
If you think that a supraventricular premature beat (SVPB) or a ventricular premature beat (VPB) is present, please specify the type of beat, then see if conduction from the atria to the ventricles as well as conduction within the ventricles is normal or not.

P _____

QRS _____

T _____

ECG 1



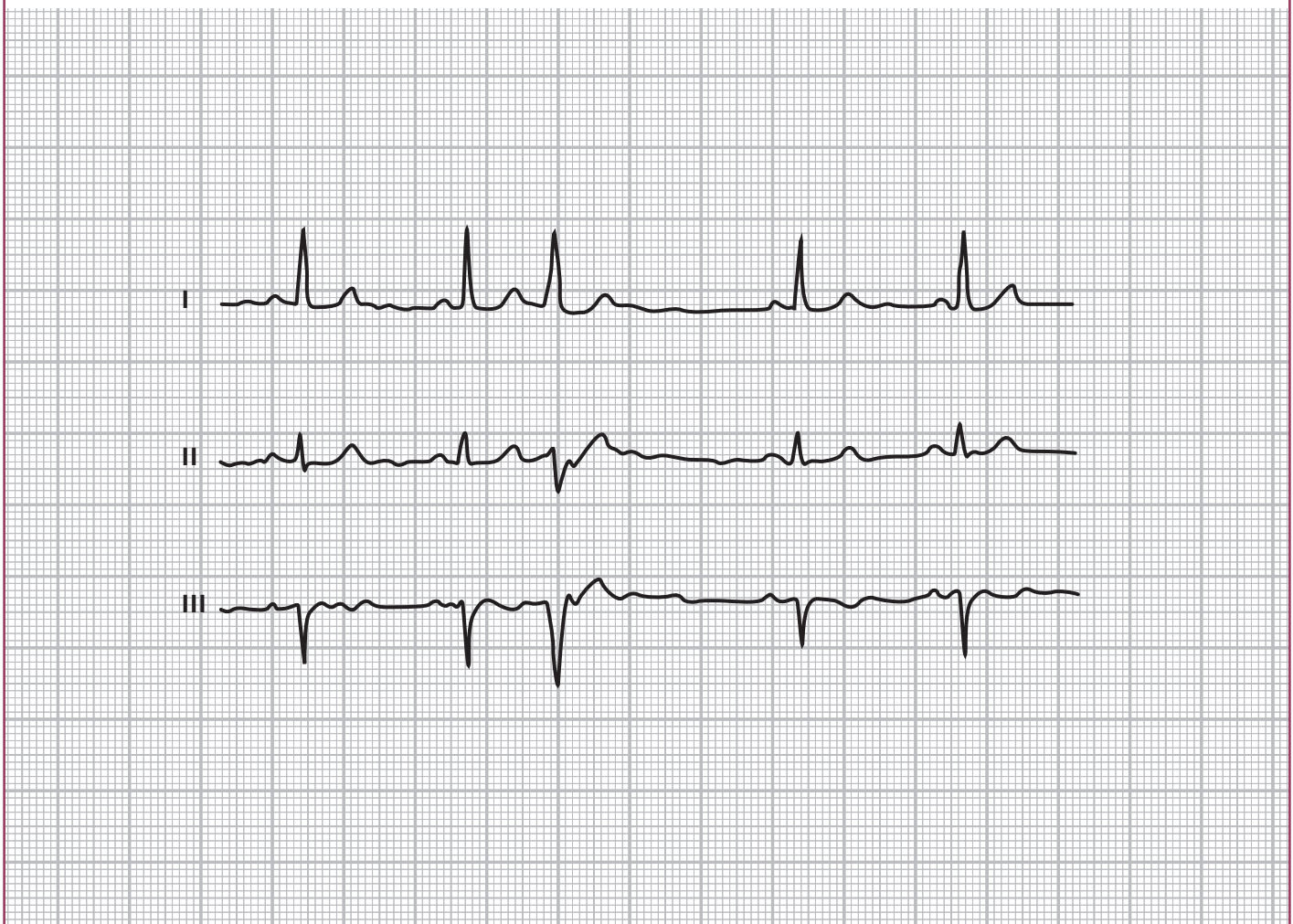
Can you identify the underlying rhythm?

Is there a change in the rhythm?

Other findings:

SUPRAVENTRICULAR	VENTRICULAR
SVPB	VPB with compensatory pause
junctional premature beat	interpolated VPB
↓	
with prolonged PR	
with AV block	
with aberrant ventricular conduction	

P _____
QRS _____
T _____



Can you identify the underlying rhythm?

Is there a change in the rhythm?

Other findings:

SUPRAVENTRICULAR

SVPB
junctional premature beat

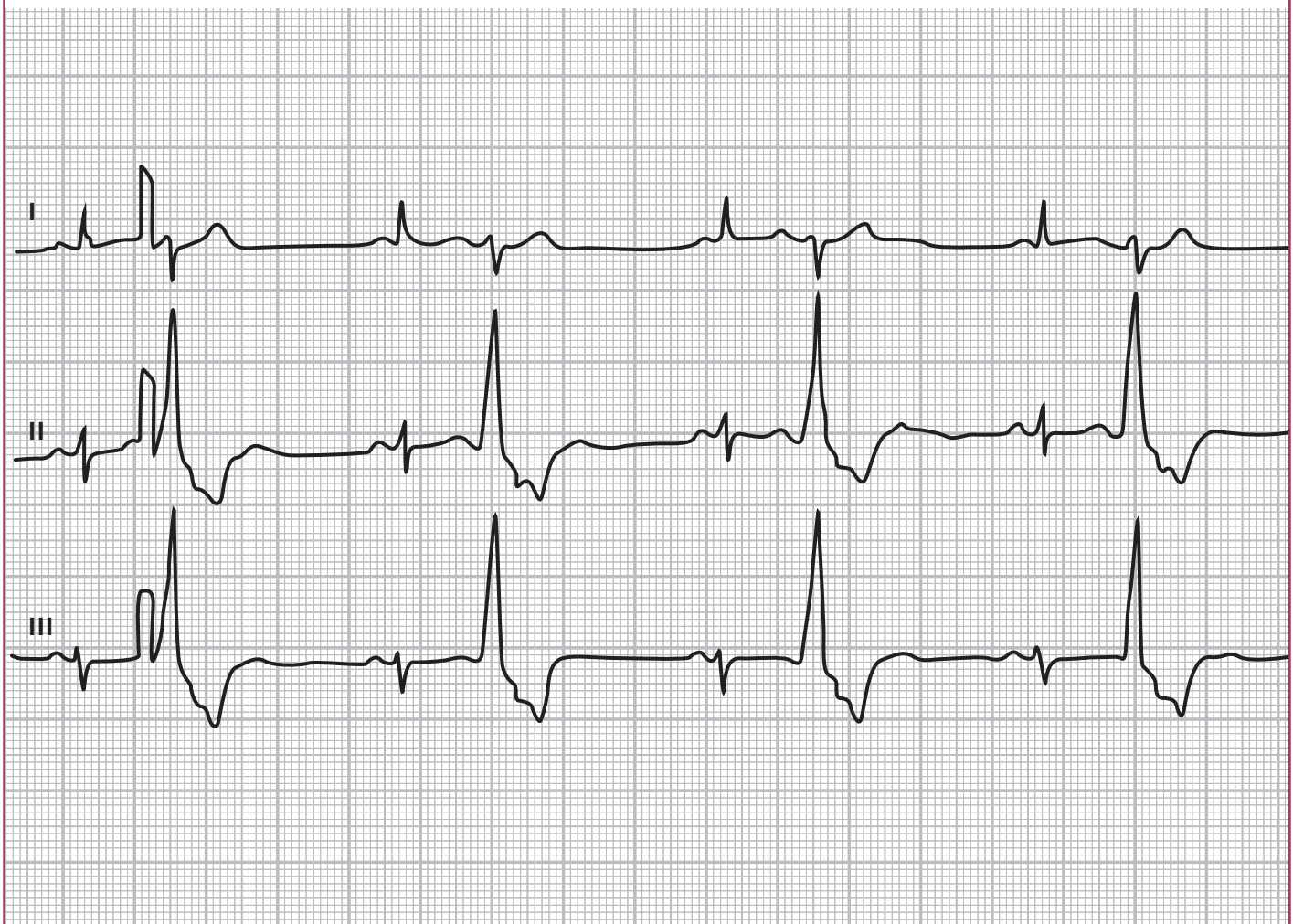
↓

with prolonged PR
with AV block
with aberrant ventricular conduction

VENTRICULAR

VPB with compensatory pause
interpolated VPB

P _____
QRS _____
T _____



Can you identify the underlying rhythm?

Is there a change in the rhythm?

Other findings:

SUPRAVENTRICULAR

SVPB	
junctional premature beat	

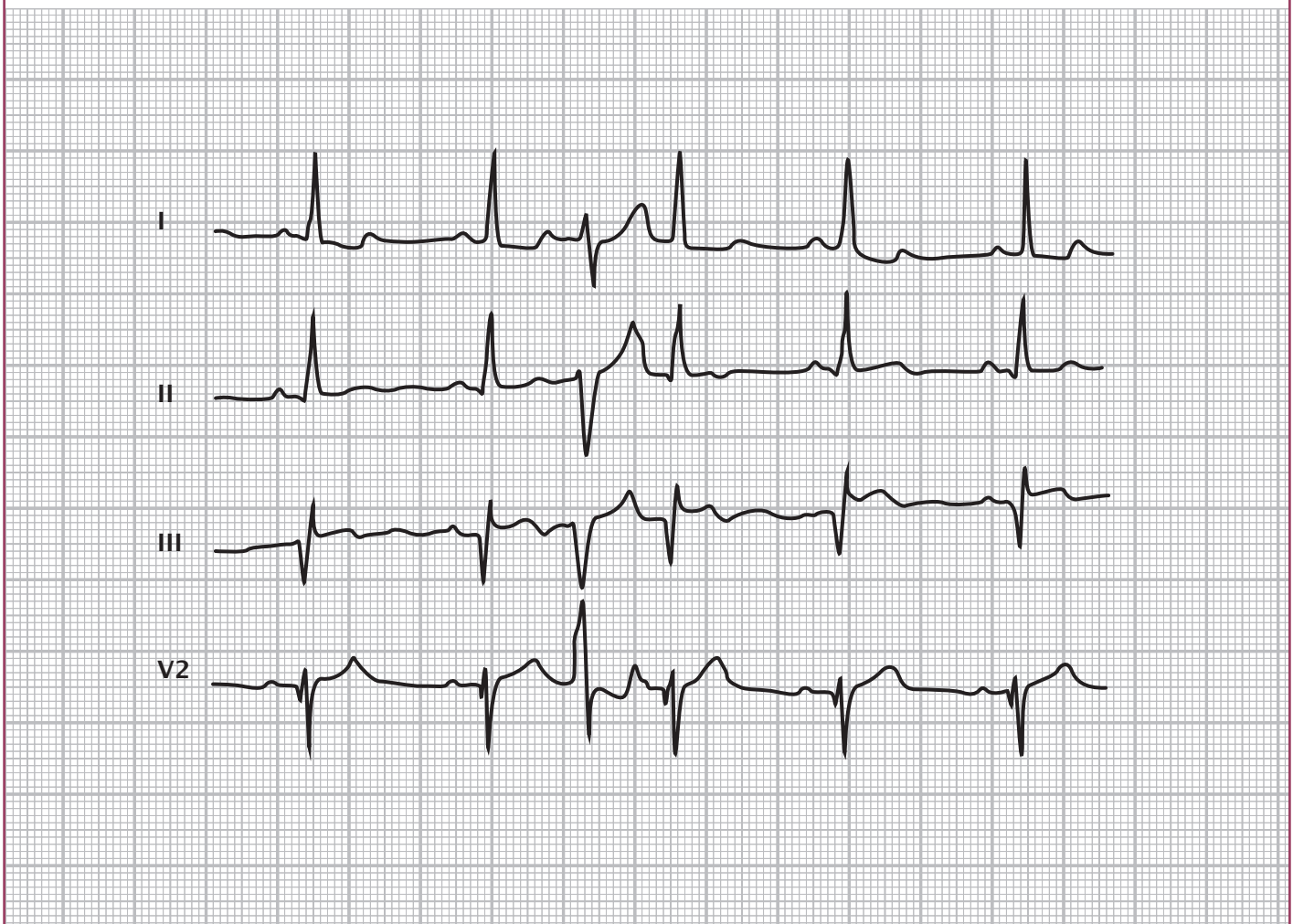
↓

with prolonged PR	
with AV block	
with aberrant ventricular conduction	

VENTRICULAR

VPB with compensatory pause	
interpolated VPB	

P _____
QRS _____
T _____



Can you identify the underlying rhythm?

Is there a change in the rhythm?

Other findings:

SUPRAVENTRICULAR

SVPB	
junctional premature beat	

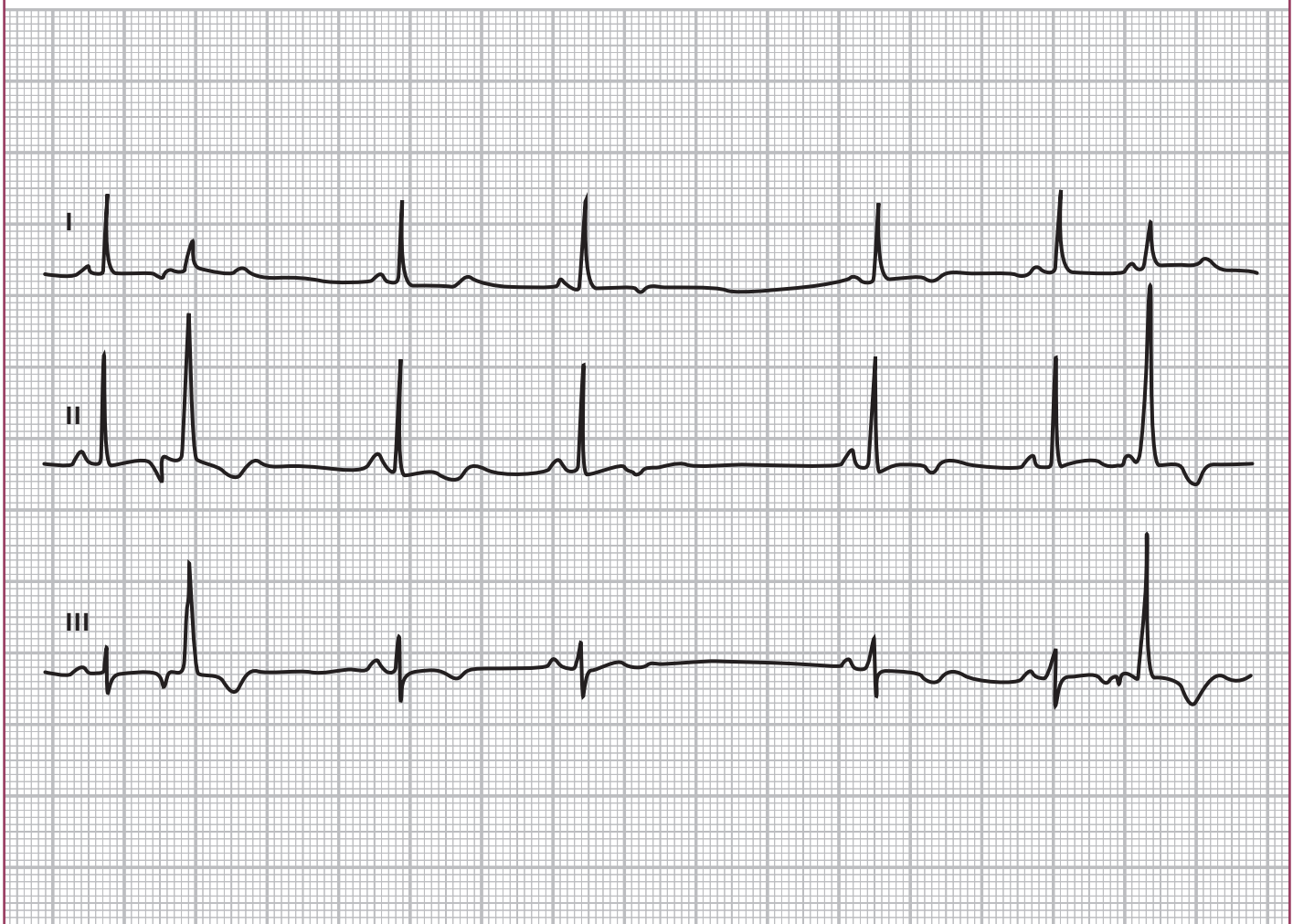
↓

with prolonged PR	
with AV block	
with aberrant ventricular conduction	

VENTRICULAR

VPB with compensatory pause	
interpolated VPB	

P _____
QRS _____
T _____



Can you identify the underlying rhythm?

Is there a change in the rhythm?

Other findings:

SUPRAVENTRICULAR

SVPB	
junctional premature beat	

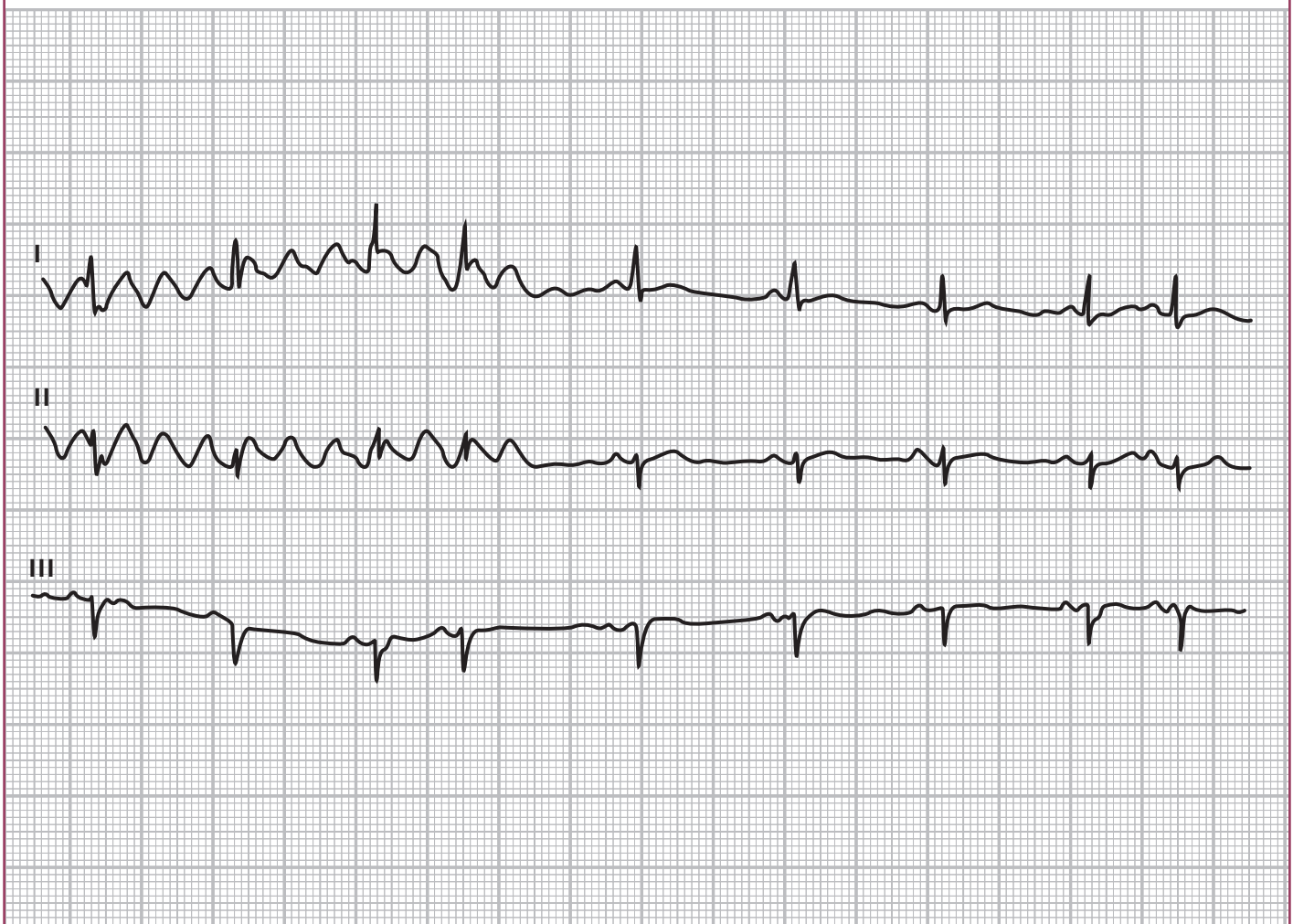
↓

with prolonged PR	
with AV block	
with aberrant ventricular conduction	

VENTRICULAR

VPB with compensatory pause	
interpolated VPB	

P _____
QRS _____
T _____



Can you identify the underlying rhythm?

Is there a change in the rhythm?

Other findings:

SUPRAVENTRICULAR

SVPB
junctional premature beat

↓

with prolonged PR
with AV block
with aberrant ventricular conduction

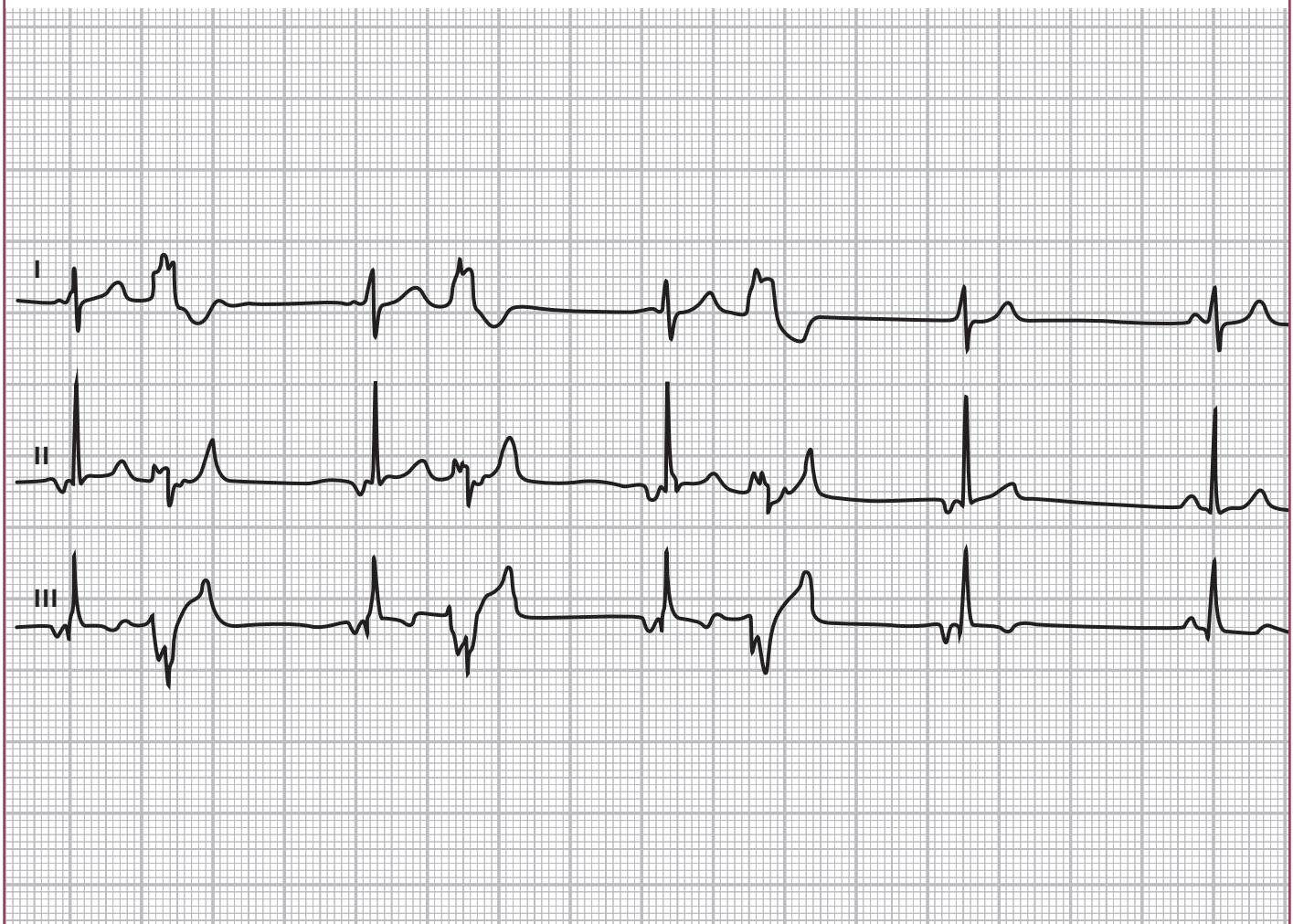
VENTRICULAR

VPB with compensatory pause
interpolated VPB

P _____

QRS _____

T _____



Can you identify the underlying rhythm?

Is there a change in the rhythm?

Other findings:

SUPRAVENTRICULAR

SVPB	
junctional premature beat	

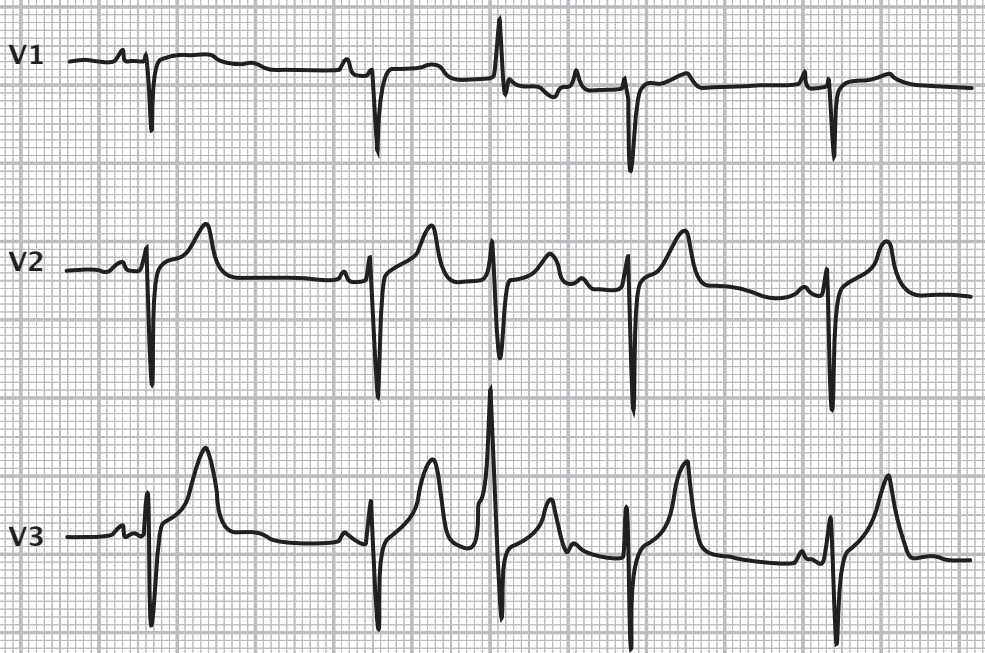
↓

with prolonged PR	
with AV block	
with aberrant ventricular conduction	

VENTRICULAR

VPB with compensatory pause	
interpolated VPB	

P _____
QRS _____
T _____



Can you identify the underlying rhythm?

Is there a change in the rhythm?

Other findings:

SUPRAVENTRICULAR

SVPB
junctional premature beat

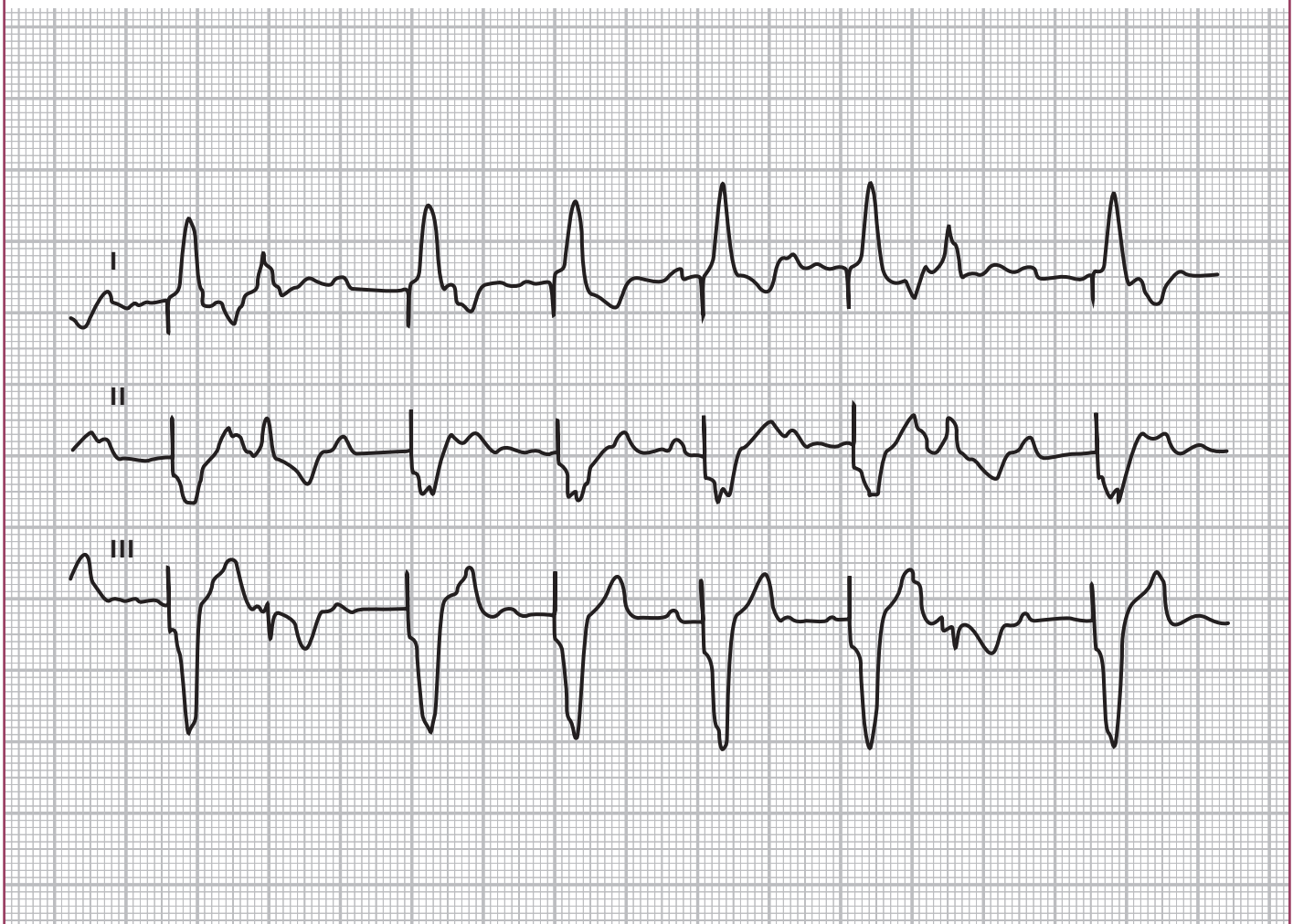
VENTRICULAR

VPB with compensatory pause
interpolated VPB



with prolonged PR
with AV block
with aberrant ventricular conduction

P _____
QRS _____
T _____



Can you identify the underlying rhythm?

Is there a change in the rhythm?

Other findings:

SUPRAVENTRICULAR

SVPB
junctional premature beat

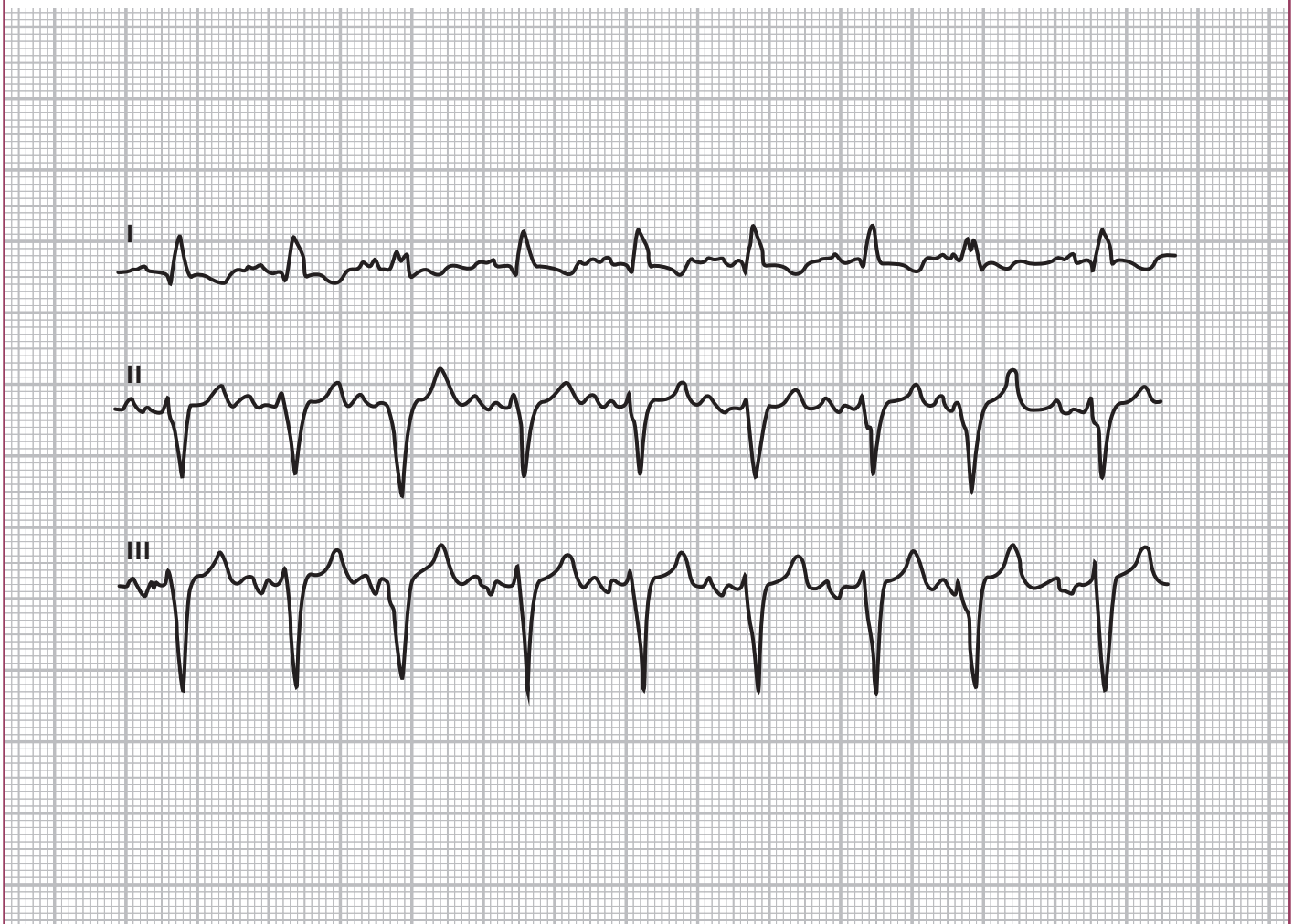
↓

with prolonged PR
with AV block
with aberrant ventricular conduction

VENTRICULAR

VPB with compensatory pause
interpolated VPB

P _____
QRS _____
T _____



Can you identify the underlying rhythm?

Is there a change in the rhythm?

Other findings:

SUPRAVENTRICULAR

SVPB
junctional premature beat

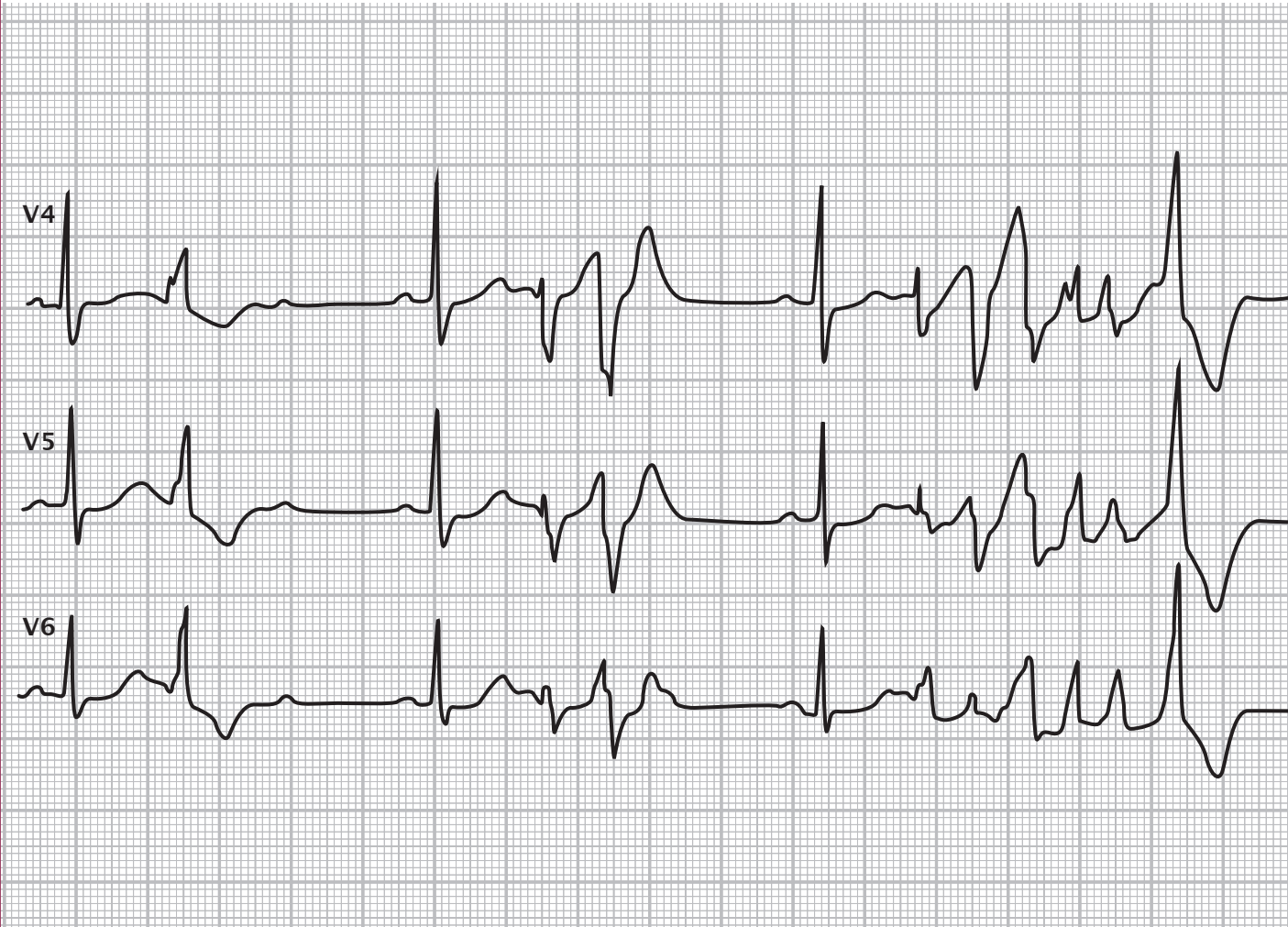
↓

with prolonged PR
with AV block
with aberrant ventricular conduction

VENTRICULAR

VPB with compensatory pause
interpolated VPB

P _____
 QRS _____
 T _____



Can you identify the underlying rhythm?
 Is there a change in the rhythm?

Other findings:

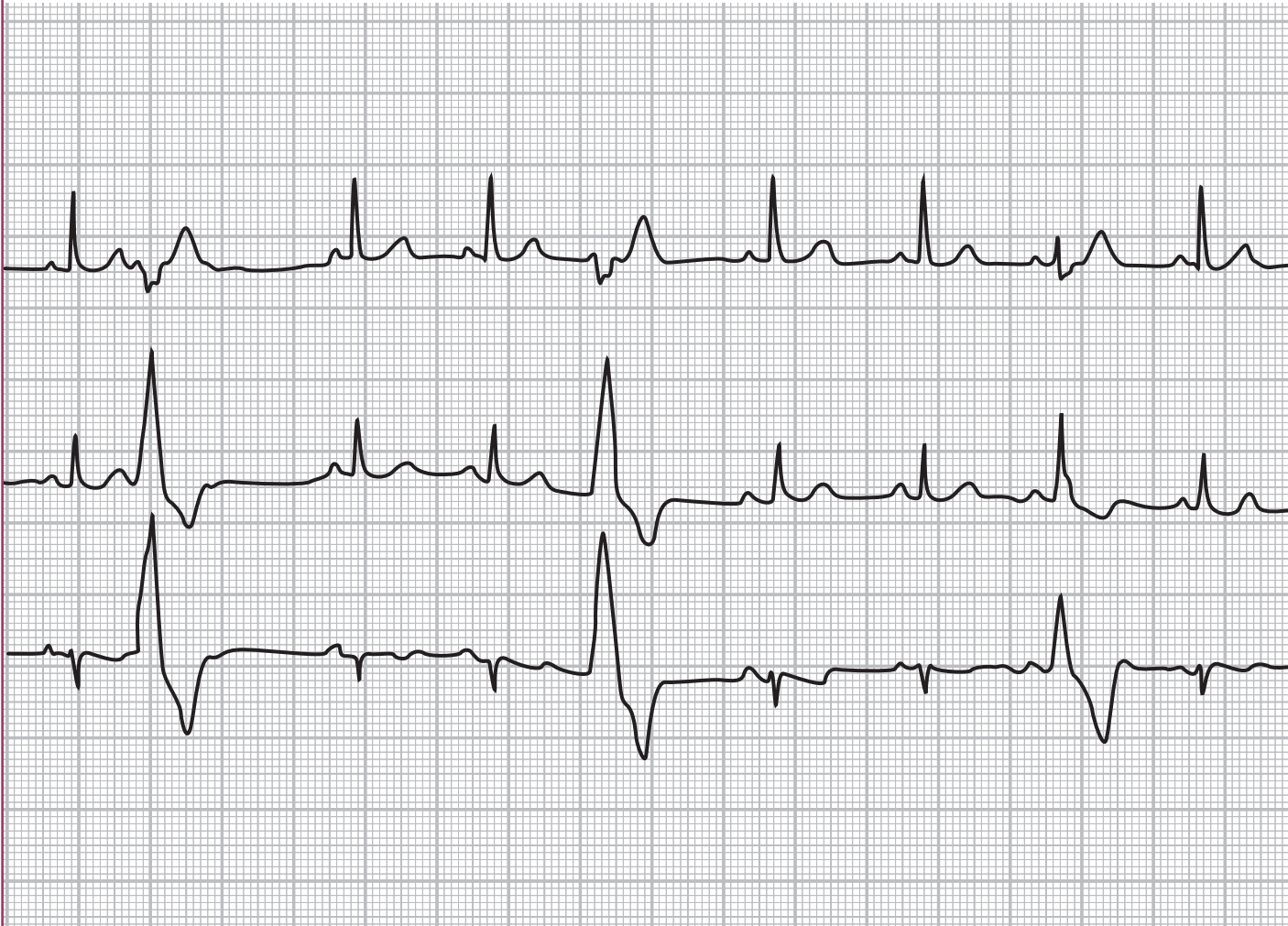
SUPRAVENTRICULAR	
SVPB
junctional premature beat

↓

with prolonged PR
with AV block
with aberrant ventricular conduction

VENTRICULAR	
VPB with compensatory pause
interpolated VPB
polymorphic VPB

P _____
 QRS _____
 T _____



Can you identify the underlying rhythm?
 Is there a change in the rhythm?

Other findings:

SUPRAVENTRICULAR

SVPB
 junctional premature beat

VENTRICULAR

VPB with compensatory pause
 interpolated VPB
 polymorphic VPB

with prolonged PR
 with AV block
 with aberrant ventricular conduction